

For Residential and Commercial Applications

Job Name		Engineer / Architect	
Job Location		Wholesaler	
Submittal Date		Contractor	

72 Series Compression x Male Iron Pipe Tees

Use: For use with potable water in instrumentation, hydraulic, and pneumatic systems. Designed for use with aluminum, copper, and plastic* tubing. Not intended for use with steel tubing.

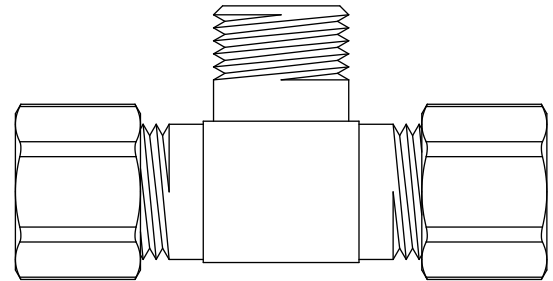
* Plastic tubing requires a plastic insert and a sleeve (see 60PT & 63PT submittal forms for details)

Design Features:

- **Little to no tube preparation.** Compression fittings do not require flaring, soldering, or other types of tube preparation
- **Available in** a broad range of sizes
- **✓ No Lead** available

Operating Specifications:

- Temperature:** -65° - 250° F at max operating pressures
Working Pressure: See chart below
Vibration: Fair vibration resistance



WORKING PRESSURE		
PSI	Tube OD	Tube Wall (Inches)
400	1/8"	.030
400	3/16"	.030
300	1/4"	.030
300	5/16"	.032
200	3/8"	.032
200	1/2"	.032
150	5/8"	.035
100	3/4"	.035
75	7/8"	.035

STANDARD MATERIAL SPECIFICATIONS	
Fitting Body	Brass
Compression Sleeve	Brass
Compression Nut	Brass

NO-LEAD MATERIAL SPECIFICATIONS	
Fitting Body	No-Lead brass
Compression Sleeve	Brass
Compression Nut	Brass

Standard Part Listing:

- 72-2-2 1/8" OD tube x 1/8" OD tube x 1/8" MIP
- 72-3-2 3/16" OD tube x 3/16" OD tube x 1/8" MIP
- 72-4-2 1/4" OD tube x 1/4" OD tube x 1/8" MIP
- 72-4-2-1 B 1/4" OD tube x 1/4" OD tube x 1/8" MIP – body only, bulk
- 72-4-4 1/4" OD tube x 1/4" OD tube x 1/4" MIP
- 72-4-4-1 B 1/4" OD tube x 1/4" OD tube x 1/4" MIP – body only, bulk
- 72-5-2 5/16" OD tube x 5/16" OD tube x 1/8" MIP

This specification and all information contained herein is the confidential and exclusive property of BrassCraft Manufacturing, and shall not be disclosed to others without the written consent of BrassCraft Mfg. This specification must be returned to BrassCraft Mfg. if requested.



72 Series Compression x Male Iron Pipe Tees

Standard Part Listing cont.:

- 72-5-2-1 B 5/16" OD tube x 5/16" OD tube x 1/8" MIP – body only, bulk
- 72-5-4 5/16" OD tube x 5/16" OD tube x 1/4" MIP
- 72-5-4-1 B 5/16" OD tube x 5/16" OD tube x 1/4" MIP – body only, bulk
- 72-6-2 3/8" OD tube x 3/8" OD tube x 1/8" MIP
- 72-6-4 3/8" OD tube x 3/8" OD tube x 1/4" MIP
- 72-6-4 B 3/8" OD tube x 3/8" OD tube x 1/4" MIP, bulk
- 72-6-4-1 B 3/8" OD tube x 3/8" OD tube x 1/4" MIP – body only, bulk
- 72-6-6 3/8" OD tube x 3/8" OD tube x 3/8" MIP
- 72-6-6-1 B 3/8" OD tube x 3/8" OD tube x 3/8" MIP – body only, bulk
- 72-8-6 1/2" OD tube x 1/2" OD tube x 3/8" MIP
- 72-8-8 1/2" OD tube x 1/2" OD tube x 1/2" MIP
- 72-10-8 5/8" OD tube x 5/8" OD tube x 1/2" MIP

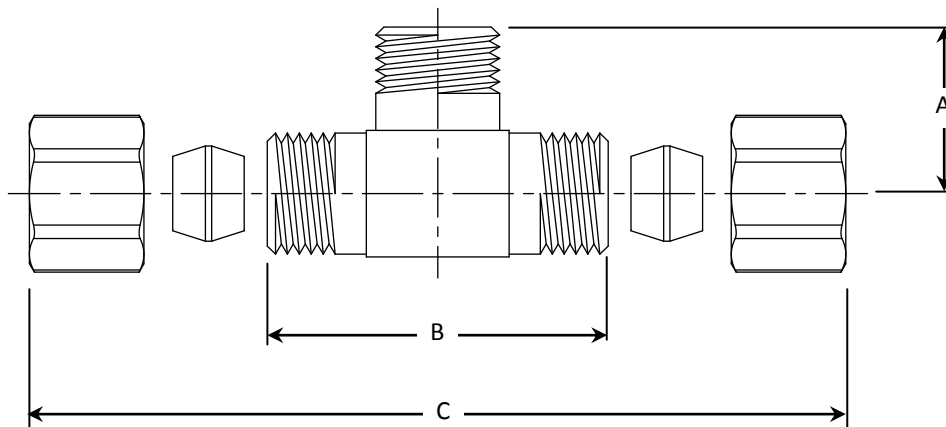
No-Lead Part Listing:

- 72-4-2X 1/4" OD tube x 1/4" OD tube x 1/8" MIP
- 72-4-2-1X B 1/4" OD tube x 1/4" OD tube x 1/8" MIP – body only, bulk
- 72-4-4X 1/4" OD tube x 1/4" OD tube x 1/4" MIP
- 72-4-4-1X B 1/4" OD tube x 1/4" OD tube x 1/4" MIP – body only, bulk
- 72-6-6X 3/8" OD tube x 3/8" OD tube x 3/8" MIP
- 72-6-6-1X B 3/8" OD tube x 3/8" OD tube x 3/8" MIP – body only, bulk

PART DIMENSIONS (Inches)			
Model	DIM. A	DIM. B	DIM. C
72-2-2	.71	1.20	1.65
72-3-2	.71	1.24	1.75
72-4-2	.71	1.27	1.82
72-4-2-1	.71	1.27	N/A
72-4-2-1X	.53	1.10	N/A
72-4-2X	.53	1.10	1.71
72-4-4	.82	1.38	1.56

PART DIMENSIONS (Inches)			
Model	DIM. A	DIM. B	DIM. C
72-4-4X	.76	1.26	1.84
72-4-4-1	.89	1.38	N/A
72-4-4-1X	.76	1.26	N/A
72-5-2	.76	1.43	2.02
72-5-2-1	.76	1.45	N/A
72-6-2	.75	1.53	2.10
72-6-4	.90	1.57	2.15

PART DIMENSIONS (Inches)			
Model	DIM. A	DIM. B	DIM. C
72-6-6	.98	1.57	2.15
72-6-6X	.98	1.43	2.05
72-6-6-1	.98	1.57	N/A
72-6-6-1X	.86	1.45	N/A
72-8-6	1.14	1.88	2.57
72-8-8	1.21	1.96	2.62
72-10-8	1.28	2.13	2.82



Listings & Certifications:

- No-Lead product CSA listed to Low-Lead Content Certification Program – Plumbing Products Class 6853-01



This specification and all information contained herein is the confidential and exclusive property of BrassCraft Manufacturing, and shall not be disclosed to others without the written consent of BrassCraft Mfg. This specification must be returned to BrassCraft Mfg. if requested.

