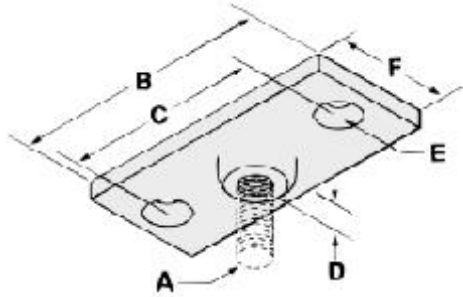




# CEILING FLANGE

## Fig. 940, 941, & 942 CEILING FLANGE

- Fig. 940      PLAIN
- Fig. 941      ELECTRO-GALVANIZED
- Fig. 942      COPPER COLOR EPOXY FINISH



$\frac{3}{8}$ " Available in stainless steel.  
To order, specify 304 or 316 and add suffix SS to figure number.  
Price on request.

**FUNCTION:** Designed to provide a means for attaching hanger rod to wood beams or ceilings.  
**MATERIAL:** Malleable iron  
**ORDERING:** Specify thread size and figure number.

Rod Size A	B	C	D	E	F	Max. Rec. Load		Wt. Each	
						lbs.	Kn	lbs.	kg
$\frac{3}{8}$	$2\frac{3}{4}$ (69.85)	2 (50.8)	$\frac{1}{2}$ (12.7)	$\frac{5}{16}$ (7.94)	$1\frac{3}{8}$ (34.93)	180	(0.8)	.18	(.08)
$\frac{1}{2}$	$2\frac{3}{4}$ (69.85)	2 (50.8)	$\frac{1}{2}$ (12.7)	$\frac{5}{16}$ (7.94)	$1\frac{3}{8}$ (34.93)	180	(0.8)	.18	(.08)

\*For  $\frac{3}{8}$ " size, see Fig. 945 EG or Fig. 946 CP Steel Ceiling Plate.

Unless otherwise specified, all dimensions on drawings and in charts are in inches and dimensions shown in parentheses are in millimeters.