



PRODUCT INFORMATION

APPLICATION

Spears® Copper Tube Size (CTS) fittings are manufactured from chlorinated polyvinyl chloride (CPVC) for use with SDR-11 piping systems of CTS outside diameter in hot and cold water distribution systems. Check state and local codes for application and restrictions.

CONFORMANCE STANDARDS

Spears® CPVC CTS fittings conform to ASTM D 2846 Specification for Chlorinated Poly (Vinyl Chloride) (CPVC) Plastic Hot and Cold Water Distribution Systems.

WORKING PRESSURE

Spears® CPVC CTS fittings have a continuous working pressure rating of 100 psi at 180°F (82°C) [400 psi at 73°F (23°C)].

PRODUCT CERTIFICATION

Spears® CPVC CTS fittings and Special Reinforced (SR) Thread transition adapters are tested and certified by the National Sanitation Foundation (NSF®) to ASTM D 2846 for use in Hot and Cold Water Distribution Systems, and for safe use in potable water systems under NSF® Standard 14/61.

TESTING

Once the system has been installed and allowed to cure properly, the system shall be tested in accordance with applicable code requirements. When testing with water (hydrostatic testing), the system must be slowly filled with water and the air bled from the highest and furthest points in the system before test pressure is applied. Failure to do so can cause damage to the piping system and could be harmful to the job site personnel should a failure occur. If a leak is found, the affected product must be cut out and discarded. A new section can be installed using couplings or other approved means.

Part Number	Size	Std Pk	Mstr Ctn	Prod Code
-------------	------	--------	----------	-----------

Tee

Socket x Socket x Socket



NSF® Certified Lead Free

Part Number	Size	Std Pk	Mstr Ctn	Prod Code
4101-005	1/2	100	500	035
4101-007	3/4	50	250	035
4101-010	1	10	100	035
4101-012	1-1/4	10	100	035
4101-015	1-1/2	5	50	035
4101-020	2	5	25	035

Tee - Reducing

Socket x Socket x Socket



NSF® Certified Lead Free

Part Number	Size	Std Pk	Mstr Ctn	Prod Code
4101-074	1/2X1/2X3/4	10	100	035
4101-094	3/4X1/2X1/2	50	250	035
4101-095	3/4X1/2X3/4	25	250	035
4101-101	3/4X3/4X1/2	50	250	035
4101-102 ¹	3/4X3/4X1	10	100	035
4101-120 ¹	1X1/2X1/2	10	100	035
4101-121 ¹	1X1/2X3/4	10	100	035
4101-122 ¹	1X1/2X1	10	100	035
4101-124 ¹	1X3/4X1/2	10	100	035
4101-125	1X3/4X3/4	10	100	035
4101-126 ¹	1X3/4X1	10	100	035
4101-130	1X1X1/2	10	100	035
4101-131	1X1X3/4	10	100	035
4101-138 ¹	1-1/4X1/2X1/2	10	80	035
4101-139 ¹	1-1/4X1/2X3/4	10	80	035

Part Number	Size	Std Pk	Mstr Ctn	Prod Code
-------------	------	--------	----------	-----------

Tee - Reducing (continued)

Socket x Socket x Socket

Part Number	Size	Std Pk	Mstr Ctn	Prod Code
4101-142 ¹	1-1/4X1/2X1-1/4	10	80	035
4101-146 ¹	1-1/4X3/4X1/2	10	80	035
4101-147 ¹	1-1/4X3/4X3/4	10	80	035
4101-148 ¹	1-1/4X3/4X1	10	80	035
4101-149 ¹	1-1/4X3/4X1-1/4	10	80	035
4101-156 ¹	1-1/4X1X1/2	10	80	035
4101-157 ¹	1-1/4X1X3/4	10	80	035
4101-158 ¹	1-1/4X1X1	10	100	035
4101-159 ¹	1-1/4X1X1-1/4	10	80	035
4101-166	1-1/4X1-1/4X1/2	10	100	035
4101-168	1-1/4X1-1/4X1	10	100	035
4101-167	1-1/4X1-1/4X3/4	10	100	035
4101-169 ¹	1-1/4X1-1/4X1-1/2	5	40	035
4101-173 ¹	1-1/2X1/2X1/2	5	40	035
4101-174 ¹	1-1/2X1/2X3/4	5	40	035
4101-175 ¹	1-1/2X1/2X1	5	40	035
4101-176 ¹	1-1/2X1/2X1-1/4	5	40	035
4101-177 ¹	1-1/2X1/2X1-1/2	5	40	035
4101-182 ¹	1-1/2X3/4X1/2	5	40	035
4101-184 ¹	1-1/2X3/4X3/4	5	40	035
4101-185 ¹	1-1/2X3/4X1	5	40	035
4101-186 ¹	1-1/2X3/4X1-1/4	5	40	035
4101-188 ¹	1-1/2X3/4X1-1/2	5	40	035
4101-193 ¹	1-1/2X1X1/2	5	40	035
4101-194 ¹	1-1/2X1X3/4	5	40	035
4101-195 ¹	1-1/2X1X1	10	100	035
4101-196 ¹	1-1/2X1X1-1/4	5	40	035
4101-197 ¹	1-1/2X1X1-1/2	5	40	035
4101-199 ¹	1-1/2X1-1/4X1/2	5	40	035
4101-201 ¹	1-1/2X1-1/4X3/4	5	40	035
4101-202 ¹	1-1/2X1-1/4X1	5	40	035



CTS CPVC Product
EverTUFF® CPVC CTS Products

Part Number	Size	Std Pk	Mstr Ctn	Prod Code
-------------	------	--------	----------	-----------

Tee - Reducing (continued)

Socket x Socket x Socket

4101-203 ¹	1-1/2X1-1/4X1-1/4	5	40	035
4101-204 ¹	1-1/2X1-1/4X1-1/2	5	40	035
4101-209	1-1/2X1-1/2X1/2	10	50	035
4101-210	1-1/2X1-1/2X3/4	10	100	035
4101-211	1-1/2X1-1/2X1	5	50	035
4101-212 ¹	1-1/2X1-1/2X1-1/4	5	50	035
4101-213 ¹	1-1/2X1-1/2X2	5	0	035
4101-216 ¹	2X1/2X1/2	5	0	035
4101-217 ¹	2X1/2X3/4	5	0	035
4101-218 ¹	2X1/2X1	5	0	035
4101-219 ¹	2X1/2X1-1/4	5	0	035
4101-220 ¹	2X1/2X1-1/2	5	0	035
4101-221 ¹	2X1/2X2	5	0	035
4101-222 ¹	2X3/4X1/2	5	0	035
4101-223 ¹	2X3/4X3/4	5	0	035
4101-224 ¹	2X3/4X1	5	0	035
4101-225 ¹	2X3/4X1-1/4	5	0	035
4101-226 ¹	2X3/4X1-1/2	5	0	035
4101-227 ¹	2X3/4X2	5	0	035
4101-228 ¹	2X1X1/2	5	0	035
4101-229 ¹	2X1X3/4	5	0	035
4101-230 ¹	2X1X1	5	0	035
4101-231 ¹	2X1X1-1/4	5	0	035
4101-232 ¹	2X1X1-1/2	5	0	035
4101-233 ¹	2X1X2	5	0	035
4101-234 ¹	2X1-1/4X1/2	5	0	035
4101-235 ¹	2X1-1/4X3/4	5	0	035
4101-236 ¹	2X1-1/4X1	5	0	035
4101-237 ¹	2X1-1/2X1/2	5	0	035
4101-238 ¹	2X1-1/2X3/4	5	0	035
4101-239 ¹	2X1-1/2X1	5	0	035
4101-240 ¹	2X1-1/2X1-1/4	5	0	035
4101-241 ¹	2X1-1/2X1-1/2	5	0	035
4101-242 ¹	2X1-1/4X1-1/4	5	0	035
4101-243 ¹	2X1-1/4X1-1/2	5	0	035
4101-244 ¹	2X1-1/4X2	5	0	035
4101-247	2X2X1/2	10	30	035
4101-248	2X2X3/4	5	25	035
4101-249	2X2X1	5	25	035
4101-250 ¹	2X2X1-1/4	5	25	035
4101-251	2X2X1-1/2	5	25	035
4101-257 ¹	2X1-1/2X2	5	0	035

¹ Outlet sized with bushing.

Drop Ear Tee - CPVC Fitting with Bracket

Socket x Socket x Socket

NSF® Certified Lead Free

DE4101-005	1/2	25	150	035
------------	-----	----	-----	-----



Part Number	Size	Std Pk	Mstr Ctn	Prod Code
-------------	------	--------	----------	-----------

90° EII

Socket x Socket

NSF® Certified Lead Free

4106-005	1/2	100	1000	035
4106-007	3/4	50	500	035
4106-010	1	10	100	035
4106-012	1-1/4	10	100	035
4106-015	1-1/2	10	100	035
4106-020	2	5	100	035



90° EII - Reducing

Socket x Socket

NSF® Certified Lead Free

4106-101	3/4X1/2	50	250	035
4106-130 ¹	1X1/2	25	200	035
4106-131 ¹	1X3/4	25	200	035
4106-167 ¹	1-1/4X3/4	10	80	035
4106-168 ¹	1-1/4X1	10	80	035
4106-209 ¹	1-1/2X1/2	10	0	035
4106-210 ¹	1-1/2X3/4	10	0	035
4106-211 ¹	1-1/2X1	10	0	035
4106-212 ¹	1-1/2X1-1/4	10	0	035
4106-247 ¹	2X1/2	5	30	035
4106-248 ¹	2X3/4	5	30	035
4106-249 ¹	2X1	5	30	035
4106-250 ¹	2X1-1/4	5	30	035
4106-251 ¹	2X1-1/2	5	30	035

¹ Outlet sized with bushing.



90° EII - Special Reinforced

Socket x SR Fipt - Stainless Steel Collar

NSF® Certified Lead Free

4107-005SR	1/2	50	300	035
------------	-----	----	-----	-----



Drop Ear 90° EII - CPVC Zinc Reinforced(One Piece Unit)

Socket x SR Fipt - Zinc Collar

NSF® Certified Lead Free

DEZ4107-005SR	1/2	10	150	035
---------------	-----	----	-----	-----



Drop Ear 90° EII - CPVC Fitting with Bracket

Socket x Socket

NSF® Certified Lead Free

DE4106-005	1/2	25	150	035
------------	-----	----	-----	-----



CTS CPVC Product
EverTUFF® CPVC CTS Products



Part Number	Size	Std Pk	Mstr Ctn	Prod Code
-------------	------	--------	----------	-----------

Drop Ear 90° EII - Special Reinforced CPVC Fitting with Bracket

Socket x SR Fipt - Stainless Steel Collar

NSF® Certified Lead Free

DE4107-005SR	1/2	10	200	035
--------------	-----	----	-----	-----



Drop Ear Tee & EII Bracket ONLY

For 4101-005 and 4106-005

DES-005	1/2	1	800	035
---------	-----	---	-----	-----



Drop Ear SR EII Bracket ONLY

For 4107-005SR

DET-005	1/2	400	0	035
---------	-----	-----	---	-----



Drop Ear EII - CPVC One Piece

Socket x Socket

NSF® Certified Lead Free

DE4106-005C	1/2	50	250	035
-------------	-----	----	-----	-----



Drop Ear EII - CPVC One Piece with Gasket

Socket x Fipt

NSF® Certified Lead Free

DE4107-005CG	1/2	50	250	035
--------------	-----	----	-----	-----



Drop Ear EII - Stainless Steel Thread

Socket x SS Fipt

NSF® Certified Lead Free

DE4107-005SS	1/2	100	0	036
--------------	-----	-----	---	-----



Drop Ear EII - Stainless Steel Thread/CPVC Body

Socket x SS Fipt

NSF® Certified Lead Free

DE4107-005CSS	1/2	100	0	036
---------------	-----	-----	---	-----



90° Street EII

Spigot x Socket

NSF® Certified Lead Free

4109-005	1/2	100	500	035
----------	-----	-----	-----	-----



Part Number	Size	Std Pk	Mstr Ctn	Prod Code
-------------	------	--------	----------	-----------

90° Street EII (continued)

Spigot x Socket

4109-007	3/4	50	250	035
4109-010	1	50	100	035

90° Stub Out EII

Socket x Closed End

NSF® Certified Lead Free

S4106-005	1/2	50	0	035
-----------	-----	----	---	-----



45° EII

Socket x Socket

NSF® Certified Lead Free

4117-005	1/2	100	500	035
4117-007	3/4	50	250	035
4117-010	1	10	100	035
4117-012	1-1/4	10	100	035
4117-015	1-1/2	10	100	035
4117-020	2	10	100	035



45° Street EII

Spigot x Socket

NSF® Certified Lead Free

4127-005	1/2	100	500	035
4127-007	3/4	50	250	035
4127-010	1	50	250	035



Coupling

Socket x Socket

NSF® Certified Lead Free

4129-005	1/2	100	1000	035
4129-007	3/4	50	500	035
4129-010	1	10	100	035
4129-012	1-1/4	10	100	035
4129-015	1-1/2	10	100	035
4129-020	2	10	50	035



Coupling - Reducer

Socket x Socket

NSF® Certified Lead Free

4129-101	3/4X1/2	50	250	035
4129-130	1X1/2	25	150	035
4129-131	1X3/4	25	150	035



Made in the U.S.A.

Suitable for Oil-Free air handling to 25 psi, not for distribution of compressed air or gas
 See MSRP-1 Sheet or Check Spears® On-line Catalog at www.spearsmfg.com for Pricing



CTS CPVC Product
EverTUFF® CPVC CTS Products

Part Number	Size	Std Pk	Mstr Ctn	Prod Code
-------------	------	--------	----------	-----------

Coupling - Reducer (continued)

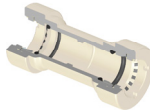
Socket x Socket

4129-166 ¹	1-1/4X1/2	10	120	035
4129-167 ¹	1-1/4X3/4	10	120	035
4129-168 ¹	1-1/4X1	10	120	035
4129-209 ¹	1-1/2X1/2	10	80	035
4129-210 ¹	1-1/2X3/4	10	60	035
4129-211 ¹	1-1/2X1	10	60	035
4129-212 ¹	1-1/2X1-1/4	10	120	035
4129-247 ¹	2X1/2	10	0	035
4129-248 ¹	2X3/4	10	0	035
4129-249	2X1	10	0	035
4129-250 ¹	2X1-1/4	10	0	035
4129-251 ¹	2X1-1/2	10	0	035

¹ Outlet sized with bushing.

GripLoc™ Coupling

WARNING: DO NOT INSERT FINGERS
Grip Socket x Grip Socket - Uses No Solvent
Cement



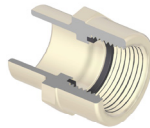
NSF® Certified Lead Free

GL4129-005	1/2	1	75	135
GL4129-007	3/4	1	50	135
GL4129-010	1	12	24	135

Note: The GripLoc™ is water tight, permanent and cannot be removed.

Female Adapter - with Gasket

Socket x Thread

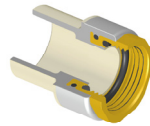


For Cold Water Service Only - NSF® Certified Lead Free

4135-005OR	1/2	100	500	035
4135-007OR	3/4	50	250	035
4135-010OR	1	10	100	035

Female Adapter - Gasket Sealed Brass Thread Transition

Socket x Gasket Fipt - Use NO Thread Sealant

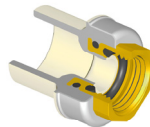


NSF® Certified Lead Free

4135-005BRG	1/2	25	150	033
4135-007BRG	3/4	25	150	033
4135-010BRG	1	15	90	033
4135-012BRG	1-1/4	15	60	033
4135-015BRG	1-1/2	10	40	033
4135-020BRG	2	8	32	033

Female Adapter - Reducing Gasket Sealed Brass Thread Transition

Socket x Gasket Fipt - Use NO Thread Sealant



NSF® Certified Lead Free

4135-101BRG	3/4X1/2	25	150	033
4135-130BRG	1X1/2	50	0	033

Part Number	Size	Std Pk	Mstr Ctn	Prod Code
-------------	------	--------	----------	-----------

Female Adapter - CPVC Special Reinforced

Socket x SR Fipt - Stainless Steel Collar



NSF® Certified Lead Free

4135-005SR	1/2	25	200	036
4135-007SR	3/4	25	300	036
4135-010SR	1	5	100	036

Female Adapter - CPVC Reducing Special Reinforced

Socket x SR Fipt - Stainless Steel Collar



NSF® Certified Lead Free

4135-131SR	1X3/4	25	150	036
------------	-------	----	-----	-----

Female Adapter - Stainless Steel Thread Transition

Socket x SS Fipt



NSF® Certified Lead Free

4135-005SS	1/2	25	150	036
4135-007SS	3/4	25	100	036
4135-010SS	1	25	50	036
4135-012SS	1-1/4	16	0	036
4135-015SS	1-1/2	16	0	036
4135-020SS	2	8	0	036

Male Adapter

Mipt x Socket



For Cold Water Service Only - NSF® Certified Lead Free

4136-005	1/2	100	1000	035
4136-007	3/4	50	500	035
4136-010	1	10	100	035
4136-012	1-1/4	10	100	035
4136-015	1-1/2	10	100	035
4136-020	2	10	100	035

Male Adapter - Reducing

Mipt x Socket



For Cold Water Service Only - NSF® Certified Lead Free

4136-074	1/2X3/4	50	250	035
4136-101	3/4X1/2	50	250	035

Male Adapter - Spigot

Mipt x Spigot



For Cold Water Service Only - NSF® Certified Lead Free

4161-005	1/2	50	700	035
----------	-----	----	-----	-----

CTS CPVC Product
EverTUFF® CPVC CTS Products



Part Number	Size	Std Pk	Mstr Ctn	Prod Code
-------------	------	--------	----------	-----------

Male Adapter - Internal Stainless Steel Reinforced

R Mipt x Socket - Stainless Steel Sleeve



NSF® Certified Lead Free

4136-005R	1/2	25	300	036
4136-007R	3/4	25	300	036
4136-010R	1	10	120	036

Male Adapter - Transition with CPVC Lined Brass Thread

Brass Mipt x Socket



NSF® Certified Lead Free

4136-005BR	1/2	60	360	033
4136-007BR	3/4	40	160	033
4136-010BR	1	10	60	033
4136-012BR	1-1/4	10	60	033
4136-015BR	1-1/2	10	40	033
4136-020BR	2	8	32	033

Male Adapter - Transition with Stainless Steel Thread

Socket x SS Mipt



NSF® Certified Lead Free

4136-005SS	1/2	25	150	036
4136-007SS	3/4	25	100	036
4136-010SS	1	25	50	036
4136-012SS	1-1/4	16	0	036
4136-015SS	1-1/2	16	0	036
4136-020SS	2	8	0	036

Reducer Bushing

Spigot x Socket



NSF® Certified Lead Free

4137-101	3/4X1/2	10	500	035
4137-130	1X1/2	10	100	035
4137-131	1X3/4	10	100	035
4137-166	1-1/4X1/2	10	100	035
4137-167	1-1/4X3/4	10	100	035
4137-168	1-1/4X1	10	100	035
4137-209	1-1/2X1/2	10	100	035
4137-210	1-1/2X3/4	10	100	035
4137-211	1-1/2X1	10	100	035
4137-212	1-1/2X1-1/4	10	100	035
4137-247	2X1/2	10	50	035
4137-248	2X3/4	10	50	035
4137-249	2X1	10	50	035
4137-250	2X1-1/4	10	50	035
4137-251	2X1-1/2	10	100	035

Part Number	Size	Std Pk	Mstr Ctn	Prod Code
-------------	------	--------	----------	-----------

Transition Bushing

IPS Spigot x CTS Socket



NSF® Certified Lead Free

4140-005	1/2	10	600	035
4140-007	3/4	10	100	035
4140-010	1	10	100	035
4140-012	1-1/4	10	100	035
4140-015	1-1/2	10	100	035
4140-020	2	10	50	035

Transition Coupling

IPS Socket x CTS Socket



NSF® Certified Lead Free

4141-007	3/4	25	300	035
4141-010	1	10	150	035

Cap

Socket

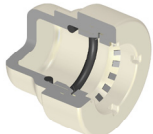


NSF® Certified Lead Free

4147-005	1/2	100	500	035
4147-007	3/4	50	250	035
4147-010	1	10	100	035
4147-012	1-1/4	10	100	035
4147-015	1-1/2	10	100	035
4147-020	2	10	50	035

GripLoc™ Cap

**WARNING: DO NOT INSERT FINGERS
Grip Socket - Uses No Solvent Cement**



NSF® Certified Lead Free

GL4147-005	1/2	25	200	135
GL4147-007	3/4	25	150	135
GL4147-010	1	10	50	135

Note: The GripLoc™ is water tight, permanent and cannot be removed.

Union

Socket with EPDM O-ring Seal



100 psi Maximum Internal Pressure @ 180°F (82°C) -
NSF® Certified Lead Free

4197-005	1/2	25	150	035
4197-007	3/4	12	48	035
4197-010	1	36	0	035
4197-012	1-1/4	12	48	035
4197-015	1-1/2	12	0	035
4197-020	2	6	36	035



CTS CPVC Product
EverTUFF® CPVC CTS Products

Part Number	Size	Std Pk	Mstr Ctn	Prod Code
-------------	------	--------	----------	-----------

Union - Special Reinforced

Socket x SR Fipt - Stainless Steel Collar

100 psi Maximum Internal Pressure @ 180°F (82°C) - NSF® Certified Lead Free

4199-005SR	1/2	20	120	036
4199-007SR	3/4	10	60	036
4199-010SR	1	10	40	036

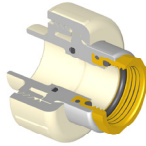


Union - Gasket Sealed Brass Thread Transition

Socket x Gasket Fipt - Use No Thread Sealant

100 psi Maximum Internal Pressure @ 180°F (82°C) - NSF® Certified Lead Free

4199-005BRG	1/2	20	120	033
4199-007BRG	3/4	10	60	033
4199-010BRG	1	10	40	033



Transition Compression Adapter

Comp w/Gasket x CPVC Spigot

NSF® Certified Lead Free

TCA-005	1/2	25	200	035
TCA-007	3/4	25	100	035



Transition Union - Brass Compression

Brass Comp x CPVC Spigot

NSF® Certified Lead Free

TUC-005	1/2	150	0	036
TUC-007	3/4	75	0	036



Transition Union - Brass Male Thread

Brass Mipt x CPVC Spigot

NSF® Certified Lead Free

TUM-005	1/2	150	0	036
TUM-007	3/4	75	0	036



Transition Union - Brass Female Thread

Brass Fipt x CPVC Spigot

NSF® Certified Lead Free

TUF-005	1/2	150	0	036
TUF-007	3/4	75	0	036



Part Number	Size	Std Pk	Mstr Ctn	Prod Code
-------------	------	--------	----------	-----------

CPVC-PEX Transition Spigot Adapters

Spigot x PEX Barb-Crimp Style

CPVC Spigot is also (Socket) NSF® Certified Lead Free

TPC-005	1/2	25	150	036
TPC-007	3/4 (1/2)	25	100	036
TPC-010	1 (3/4)	25	50	036



ASTM F1807 Standard PEX Connector, Stainless Steel

CPVC-PEX Transition Socket Adapters

Socket x PEX Barb-Crimp Style

CPVC Socket is also (Spigot) NSF® Certified Lead Free

TPC-005-S	1/2 (3/4)	25	150	036
TPC-007-S	3/4 (1)	25	100	036
TPC-010-S	1 (1-1/4)	50	300	036



ASTM F1807 Standard PEX Connector, Stainless Steel

Water Hammer Arrestor

Spigot

NSF® Certified Lead Free

WHA-005	1/2	25	100	035
---------	-----	----	-----	-----



Quarter Turn Angle Supply Stop

Socket x NPT

100 psi @ 180°F (82°C)

Male Thread for Connection to Flexible Supply Line having 1/2" Female NPT Thread Inlet - NSF® Certified Lead Free

7722-005	1/2	50	400	217
----------	-----	----	-----	-----



Quarter Turn Angle Supply Stop

SR Fipt x NPT

100 psi @ 180°F (82°C)

Male Thread for Connection to Flexible Supply Line having 1/2" Female NPT Thread Inlet - NSF® Certified Lead Free

7721-005SR	1/2	50	400	217
------------	-----	----	-----	-----



CTS CPVC Product
EverTUFF® CPVC CTS Products



Part Number	Size	Std Pk	Mstr Ctn	Prod Code
-------------	------	--------	----------	-----------

Quarter Turn Angle Supply Stop

SR Fipt x Comp Thread

100 psi @ 180°F (82°C)
Male Thread for Connection to Flexible Supply Line having
Female 3/8" Compression Thread Inlet - NSF® Certified Lead Free

7721-073SR	1/2X3/8	50	400	217
----------------------------	----------------	----	-----	-----



Quarter Turn Angle Supply Stop

Socket x Comp Thread

100 psi @ 180°F (82°C)
Male Thread for Connection to Flexible Supply Line having 1/4",
3/8" or 1/2" Female Compression Thread Inlet - NSF® Certified
Lead Free

7722CM-072	1/2X1/4	72	0	217
7722-073	1/2X3/8	50	400	217
7722CM-005	1/2	72	0	217



Quarter Turn Straight Supply Stop

Socket x Comp Thread

100 psi @ 180°F (82°C)
Male Thread for Connection to Flexible Supply Line having
Female 3/8" or 1/2" Compression Thread Inlet - NSF® Certified
Lead Free

7422CM-073	1/2X3/8	72	0	217
7422CM-005	1/2	72	0	217



Quarter Turn Straight Supply Stop

Socket x NPT

100 psi @ 180°F (82°C)
Male Thread for Connection to Flexible Supply Line having
Female 1/2" NPT Thread Inlet - NSF® Certified Lead Free

7422-005	1/2	72	0	217
--------------------------	------------	----	---	-----



Ball Valve - Commercial CTS

Socket with EPDM O-ring Seal

100 psi Maximum Internal Pressure @ 180°F (82°C)
NSF® Certified Lead Free

1922-005	1/2	25	200	217
1922-007	3/4	24	0	217
1922-010	1	25	0	217
1922-012	1-1/4	8	0	217
1922-015	1-1/2	6	0	217
1922-020	2	4	0	217



Part Number	Size	Std Pk	Mstr Ctn	Prod Code
-------------	------	--------	----------	-----------

Ball Valve - Residential CTS

Socket x Socket

NSF® Certified Lead Free

1922R-005	1/2	72	0	217
1922R-007	3/4	36	0	217
1922R-010	1	24	0	217
1922R-012	1-1/4	8	32	217
1922R-015	1-1/2	6	0	217
1922R-020	2	4	16	217



Stop Valve - Red Handle

Socket x Socket

NSF® Certified Lead Free

8422-005	1/2	36	0	217
8422-007	3/4	36	0	217



Stop Valve - Clear Handle

Socket x Socket

NSF® Certified Lead Free

8422CH-005	1/2	36	0	217
8422CH-007	3/4	36	0	217



Stop & Waste Valve

Socket x Socket

NSF® Certified Lead Free

8422W-005	1/2	36	0	217
8422W-007	3/4	36	0	217



Boiler Drain Valve

Socket x MHT

NSF® Certified Lead Free

82MH-005	1/2	36	0	217
82MH-007	3/4	36	0	217



Pipe - CPVC CTS SDR 11

10' Lengths, Priced Per Foot

NSF® Certified Lead Free

CTS-005	1/2	500	0	034
CTS-007	3/4	250	0	034
CTS-010	1	150	0	034
CTS-012	1-1/4	100	0	034
CTS-015	1-1/2	100	0	034





CTS CPVC Product
EverTUFF® CPVC CTS Products

Part Number	Size	Std Pk	Mstr Ctn	Prod Code
-------------	------	--------	----------	-----------

Pipe - CPVC CTS SDR 11 (continued)

10' Lengths, Priced Per Foot

CTS-020	2	50	0	034
---------	---	----	---	-----

• Pipe sold in bag quantities only - no broken bags • No return on Pipe • Large orders may be shipped directly from Spears® manufacturing facility. Note: Multiple drops may be made on TL shipments. Contact Spears® Regional Distribution Center for requirements and drop-off charges. • See Spears® Manufacturing Company Terms and Conditions of Sale for freight requirements.

Pipe - CPVC CTS SDR 11

20' Lengths, Priced Per Foot



NSF® Certified Lead Free

CTS-005-20	1/2	1000	0	034
CTS-007-20	3/4	500	0	034
CTS-010-20	1	300	0	034
CTS-012-20	1-1/4	200	0	034
CTS-015-20	1-1/2	200	0	034
CTS-020-20	2	100	0	034

Pipe - CPVC CTS Coiled SDR 11



100 ft. Coil, Priced Per Foot

NSF® Certified Lead Free

CTS-005-100	1/2	100	0	034
CTS-007-100	3/4	100	0	034
CTS-010-100	1	100	0	034

CPVC CTS COILED PIPE WEIGHTS:
 CTS-005-100 Weight per Foot .090 lbs; per Coil Weight 9 lbs.
 CTS-007-100 Weight per Foot .149 lbs; per Coil Weight 14.9 lbs.
 CTS-010-100 Weight per Foot .239 lbs; per Coil Weight 23.9 lbs.
WARNING: Banded coils will expand when opened. Exercise caution to avoid injury during banding removal.

CTS Tubing Straps

Std Pk Bag of 25 For Anchoring CTS Pipe



Priced Each - Sold in Full Bag Quantity Only

556A	1/2	25	500	299
556B	3/4	25	500	299

CTS Tube Talon with Nail

Std Pk Bag Quantities as Specified. For Anchoring CTS Pipe



Priced Each - Sold in Full Bag Quantity Only

555A	1/2	100	1000	299
555B	3/4	100	1000	299
555C	1	50	500	299

Part Number	Size	Std Pk	Mstr Ctn	Prod Code
-------------	------	--------	----------	-----------



Solvent Cement -EverTUFF® CTS One Step

NSF® Certified Lead Free

CTS5-005	1/4 Pint	24	0	701
CTS5-010	1/2 Pint	24	0	701
CTS5-020	Pint	12	0	701
CTS5-030	Quart	12	0	701
CTS5-040	Gallon	6	0	701

Cap Daubers



DHP-38	3/8" for 1/2 Pint	50	400	710
DHP-50	1/2" for 1/2 Pint	50	400	710
DHP-75	3/4" for 1/2 Pint	50	0	710
DP-50	1/2" for Pint	50	0	710
DP-75	3/4" for Pint	50	0	710
DP-125	1-1/4" for Pint	50	0	710
DQ-50	1/2" for Quart	50	0	710
DQ-75	3/4" for Quart	50	0	710
DQ-125	1-1/4" for Quart	50	0	710

3/8" for pipe to 3/4" • 1/2" for pipe to 1" • 3/4" for pipe to 1-1/2" • 1-1/4" for pipe 1-1/2" to 3"

Can-Mate Daubers



Adjustable Plastic Applicator with Telescoping Stem for use with Standard 1/2 Pint, Pint and Quart Cans

CM-50	1/2"	50	0	710
CM-75	3/4"	50	0	710
CM-150	1-1/4"	50	0	710

1/2" for pipe to 1" • 3/4" for pipe to 1-1/2" • 1-1/4" for pipe 1-1/2" to 3"

Deburring Tool



Cone Type for pipe from 1/2" through 2"

DEB-2	1/2" to 2" Pipe	1	6	710
-------	-----------------	---	---	-----