



# Submittal Data Information

101-140

## Zone Sentry® Ball Valve Zone Valve

Effective: October 21, 2011

Supersedes: July 28, 2011

Job: \_\_\_\_\_ Engineer: \_\_\_\_\_ Contractor: \_\_\_\_\_ Rep: \_\_\_\_\_

ITEM NO.	MODEL NO.	

### Product Specifications

Max. Operating Pressure...300 PSI (2100 kPa)  
 Max. Shutoff Pressure .....125 PSI (875 kPa)  
 Max Ambient Temp.....135°F  
 Fluid Temperature Range...20-220°F (7°-105°C)  
 Service.....Water or Water/Glycol up to 50% Glycol Close Systems (Open System — Option Available)  
 Ball Rotation Speed.....(90° turn), Approximately (after charge time)  
 Electrical Rating.....24 VAC, 60Hz 0.48 Amps  
 Power Consumption .....1.14 W, 0.48 Amps (Charging)  
 Power Consumption .....1.44W, 0.06 Amps (Power On)  
 Heat Anticipator Setting...0.5 Amps  
 End Switch Rating.....1 Amp @ 24 VAC

### Materials of Construction, Actuator:

Body ..... High Performance Engineered Polymer  
 Gears ..... High Performance Internally Lubricated Engineered Polymer

### Materials of Construction, Standard Valve:

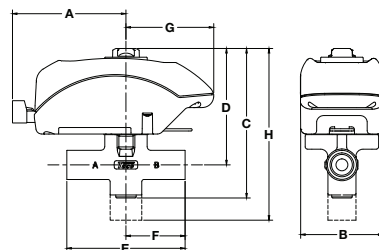
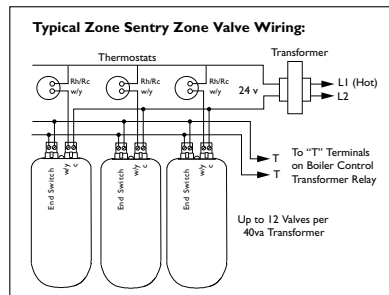
Body .....Forged Brass  
 Stem .....Brass  
 Press Ring.....Brass  
 Ball .....Brass (Chrome Plated)  
 Seat.....Modified Teflon®  
 O-Rings .....EPDM

### Application:

Taco Zone Sentry® Zone Valves provide on-off, normally open or normally closed control in both open and closed hydronic systems. The Taco Zone Sentry valve can be used in a wide variety of applications, specifically designed for use in heating systems and in chilled water systems where condensation is present. It is primarily used in baseboard, fan coils, radiators, convectors, air handlers, heat pumps and radiant applications. Refer to the Product Specifications section for choosing the correct model valve for your application.

### Ease of Installation / Operation:

The Taco Zone Sentry® is the most technologically advanced zone valve ever made. It's also simple to install and operate. The valve can be installed in any direction, in any orientation. We then went a step further, allowing the operator to be mounted to the 2-way valve body in either direction, great for those tight baseboard jobs. Snap-in quick connects on the back of the valve make for a simple, secure and fast wiring hook-up. A green LED light shows full functionality of the valve's operation and thermostat status. Under a no power situation the manual override button located on the top of the valve allows the ball to be rotated up to 90° and is also marked with a slot to indicate the position of the valve.



Valve Size	2-WAY Cv (Kv) / Ft. of Pipe Equiv.**	Close-Off Pressure (kPa)	3-WAY Cv (Kv) / Ft. of Pipe Equiv.**
1/2"	4.9 (4.3) / 9.5	0-125 psi (0-862 kPa)	1.5 (1.3) / 111
3/4"	10.3 (8.9) / 8.4	0-125 psi (0-862 kPa)	3.3 (2.8) / 82
1"	8.9 (7.7) / 47.4	0-125 psi (0-862 kPa)	3.0 (2.6) / 411

\*\*At 4' per second (Max. recommended residential flow rate).

### Zone Sentry® Dimensions: (FOR REFERENCE PURPOSES)

Valve Size	A		B		C		D		E (Sweat)		E (Threaded)		F		G		H (3-way)	
	in.	mm	in.	mm	in.	mm	in.	mm	in.	mm	in.	mm	in.	mm	in.	mm	in.	mm
1/2"	3"	76.2	2.375"	60.3	4.125"	104.7	3.06"	77.72	3.125"	79.3	4.750"	120.6	1.562"	39.7	2.312"	58.7	5.06"	128.5
3/4"	3"	76.2	2.375"	60.3	4.125"	104.7	3.12"	79.25	3.125"	79.3	3.312"	84.1	1.562"	39.7	2.312"	58.7	5.37"	136.4
1"	3"	76.2	2.375"	60.3	4.125"	104.7	3.12"	79.25	3.875"	98.4	3.875"	98.4	1.875"	47.6	2.312"	58.7	5.50"	139.7

NPT Models	Standard 2-Way	Sweat Models
Z050T2	1/2" 2-way	Z050C2
Z075T2	3/4" 2 way	Z075C2
Z100T2	1" 2-way	Z100C2

Consult factory for additional model numbers.



NPT Models	Standard 3-Way	Sweat Models
Z050T3	1/2" 3-way	Z050C3
Z075T3	3/4" 3-way	Z075C3
Z100T3	1" 3-way	Z100C3