

## 5120 Series Lead-Free Mixing Valve

This versatile NSF 61, ASSE 1017, ASSE1070 mixing valve provides the ultimate performance for domestic hot water applications. The 5120 Series ASSE1017 certification allows for domestic hot water storage at temperatures high enough to increase the effective storage capacity of a water heater, kill harmful bacteria and still be delivered at a safe 120°F or less. The ASSE 1070 listing allows for point of use applications within homes, hospitals, schools, nursing homes, public facilities, etc. where a 1070 valve is required.



**NSF® ≤ .25% Lead**

Meets California AB 1953  
and Vermont Act 193



# Submittal Data Information 5120 Series Lead-Free Mixing Valve

NSF<sub>6</sub> ≤ .25% Lead

Meets California AB 1953  
and Vermont Act 193

Submittal Data # 101-147

Supersedes: 07/30/10

Effective: 07/31/13

## Features

- ≤ .25% lead
- Dual Listed for ASSE 1017 and 1070
- UPC Certified
- Suitable for use in Potable Water
- Union and NPT Options *non-union NPT is ASSE 1017 only*
- Sweat, NPT, Pex and CPVC Union Connections
- Check Valves Included *(Except non-union versions)*
- No Routine Maintenance Required
- Lockable Max. Temperature Setting
- Outlet Temperature Strip
- Optional Dial Gauge and Adaptor

## Performance

- Cv: 1.8
- Max. Flow: 14GPM (54 L/min)<sup>1</sup>  
*<sup>1</sup>Flow should never exceed standards for pipe size*
- Min. Flow: 1GPM (3.8 L/min)<sup>1</sup>
- Hot Supply Temperature: 120-180°F (49-82°C)
- Cold Supply Temperature: 39-80°F (5-27°C)
- Max. Inlet Pressure: 200 psi (13.8 Bar)
- Max. Variation in Supply Pressure: 20%
- Min. Temperature Differential Between Hot Supply and Mixed: 27°F (15°C)
- Outlet Temperature Range: 85-120°F (29-49°C)
- Factory set to: 115-120°F (41-45°C)
- Accuracy of Outlet Temperature: (±) 3° F

## Materials

- Body: Forged Brass
- Internal Components: ≤ .25% lead Brass, Noryl GFN2
- Seals: Viton
- Spring: Stainless Steel
- Piston: Polysulfone
- Fittings: Varies (Brass, CPVC, Copper)
- Gaskets: EPDM

## Approvals/Listings

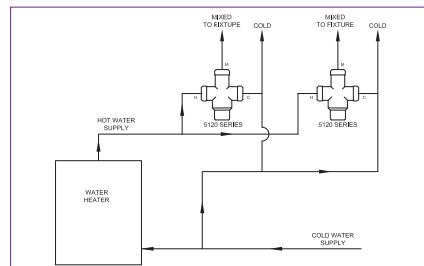
- ASSE 1017, ASSE 1070
- cUPC
- CSA125.3



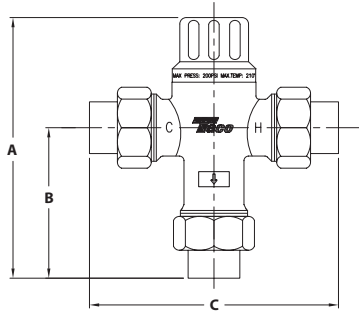
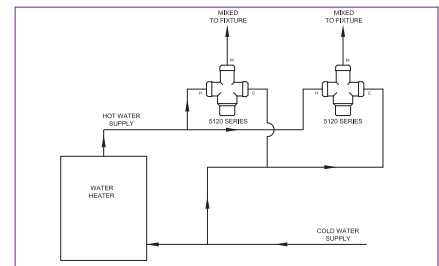
## Application:

The 5120 Series Mixing Valve is designed to control water temperatures for both point of use and point of distribution installations wherever ASSE1070 or ASSE 1017 mixing valves are required. The valves design and advanced thermostatic element ensures a stable mixed water temperature throughout the valves adjustable range.

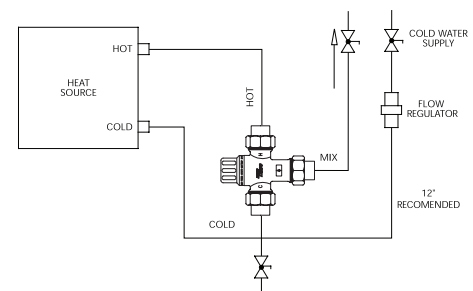
### handled fixtures



### handleless fixtures



### Point of Distribution



Taco Model	Description	A Height		B Lower Height		C Width	
		In.	mm	In.	mm	In.	mm
5122-B2	1/2" UNION CPVC	5.8	147.3	3.7	94	7.1	180.3
5122-C2	1/2" UNION SWEAT	4.8	121.9	2.7	68.6	4.8	121.9
5122-P2	1/2" UNION PEX	5.06	128.5	2.9	73.7	5.4	137.2
5122-T2	1/2" UNION NPT	5.3	134.6	3.2	81.3	5.8	147.3
5123-B2	3/4" UNION CPVC	5.8	147.3	3.7	94	7.1	180.3
5123-C2	3/4" UNION SWEAT	5	127	2.9	73.7	5.4	137.2
5123-N2	3/4" NPT FEMALE	4.3	109.2	2.2	55.9	3	76.2
5123-P2	3/4" UNION PEX	5.1	129.5	2.9	73.7	5.4	137.2
5123-T2	3/4" UNION NPT	5.5	139.7	3.4	86.4	6.3	160.02
5124-C2	1" UNION SWEAT	6.1	154.9	4	101.6	5.4	137.2
5124-P2	1" UNION PEX	5.2	132.1	3.1	78.7	5.8	147.3

Dimensions for reference only

