



Submittal Data Information

101-147

5120 Series Lead-Free Mixing Valve

Supersedes: July 30, 2010

Effective: July 31, 2013

Job: _____ Engineer: _____ Contractor: _____ Rep: _____

ITEM NO.	MODEL NO.	

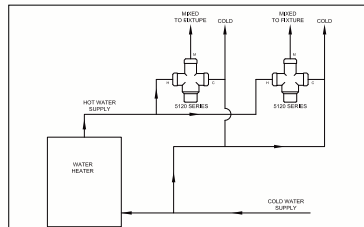
Features

- ≤ .25% lead
- Dual Listed for ASSE 1017 and 1070
- UPC Certified
- Suitable for use in Potable Water
- Union and NPT Options *non-union NPT is ASSE 1017 only*
- Sweat, NPT, Pex and CPVC Union Connections
- Check Valves Included *(Except non-union versions)*
- No Routine Maintenance Required
- Lockable Max. Temperature Setting
- Outlet Temperature Strip
- Optional Dial Gauge and Adaptor

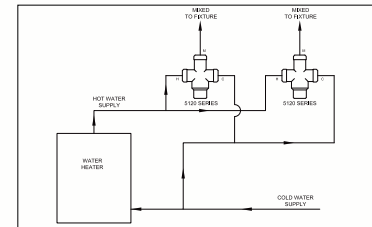
Application:

The 5120 Series Mixing Valve is designed to control water temperatures for both point of use and point of distribution installations wherever ASSE1070 or ASSE 1017 mixing valves are required. The valves design and advanced thermostatic element ensures a stable mixed water temperature throughout the valves adjustable range.

handled fixtures

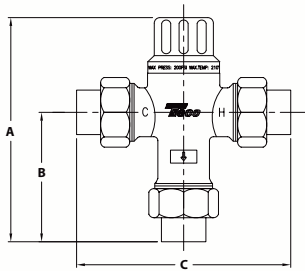


handleless fixtures

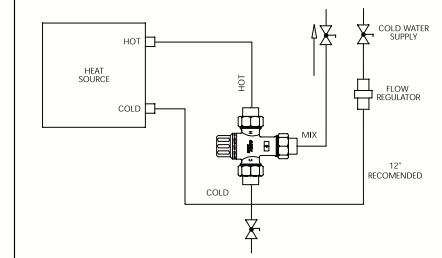


Performance

- Cv: 1.8
- Max. Flow: 14GPM (54 L/min)¹
¹Flow should never exceed standards for pipe size
- Min. Flow: 1GPM (3.8 L/min)¹
- Hot Supply Temperature: 120-180°F (49-82°C)
- Cold Supply Temperature: 39-80°F (5-27°C)
- Max. Inlet Pressure: 200 psi (13.8 Bar)
- Max. Variation in Supply Pressure: 20%
- Min. Temperature Differential Between Hot Supply and Mixed: 27°F (15°C)
- Outlet Temperature Range: 85-120°F (29-49°C)
- Factory set to: 115-120°F (41-45°C)
- Accuracy of Outlet Temperature: (±) 3° F



Point of Distribution



Materials

- Body: Forged Brass
- Internal Components: ≤ .25% lead Brass, Noryl GFN2
- Seals: Viton
- Spring: Stainless Steel
- Piston: Polysulfone
- Fittings: Varies (Brass, CPVC, Copper)
- Gaskets: EPDM

Approvals/Listings

- ASSE 1017, ASSE 1070
- cUPC
- CSA125.3

Taco Model	Description	A Height		B Lower Height		C Width	
		In.	mm	In.	mm	In.	mm
5122-B2	1/2" UNION CPVC	5.8	147.3	3.7	94	7.1	180.3
5122-P2	1/2" UNION PEX	5.06	128.5	2.9	73.7	5.4	137.2
5123-B2	3/4" UNION CPVC	5.8	147.3	3.7	94	7.1	180.3
5123-N2	3/4" NPT FEMALE	4.3	109.2	2.2	55.9	3	76.2
5123-T2	3/4" UNION NPT	5.5	139.7	3.4	86.4	6.3	160.02
5124-P2	1" UNION PEX	5.2	132.1	3.1	78.7	5.8	147.3

Dimensions for reference only



Do it Once. Do it Right.®

TACO INC., 1160 Cranston Street, Cranston, RI 02920 Telephone: (401) 942-8000 Fax: 942-2360
TACO (Canada), Ltd., 6180 Ordan Drive, Mississauga, Ontario L5T 2B3 Telephone: (905) 564-9422 Fax: (905) 564-9436

Printed in USA
Copyright 2013
TACO, Inc.