

AIR SEPARATORS

Webstone

VALVE INNOVATION



**QUALITY AND COMMITMENT
TO TECHNOLOGY AND SERVICE SINCE 1954**



AIR SEPARATOR

w/ Removable Vent Head & Coalescing Medium

KNOCKING PIPES ARE NOT NORMAL

The Webstone Air Separator uses a unique coalescing medium to capture both micro bubbles and static air from within a hydronic heating system.

FEATURES

- Reduces noise
- Improves system efficiency and operation
- Reduces wear on system components
- Requires no regular maintenance
- Fewer call backs

IDEAL FOR USE WITH



See back cover for additional information.

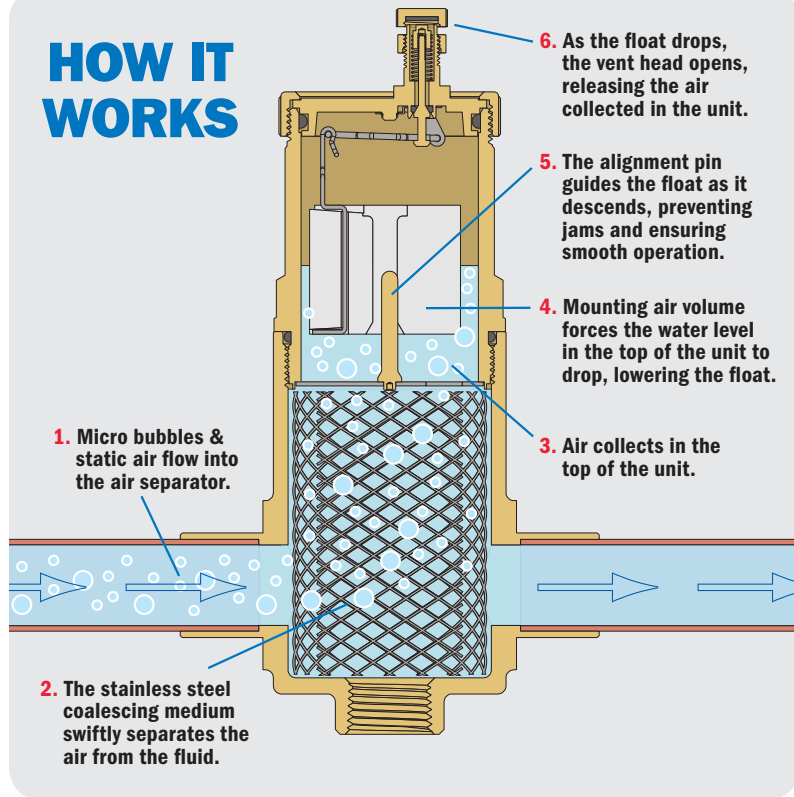
ALSO AVAILABLE IN



- Compatible with popular press tools
- Available in sizes 3/4" - 2"



HOW IT WORKS



DESIGN ADVANTAGES

- Corrosion-resistant stainless steel coalescing medium
- Pin guided float ensures smooth operation
- Vent head & coalescing medium can be removed for cleaning
- Flow may be directed into either side of the unit
- Replacement Vent Assemblies are available
- Guaranteed for Life

FORGED BRASS AIR SEPARATOR

w/ Removable Vent Head & Coalescing Medium

150 PSI

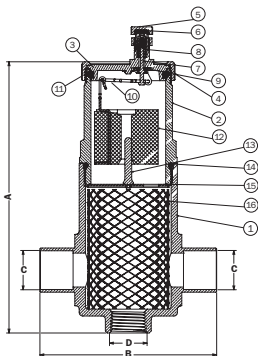
		STANDARD BRASS		A	B	C	D	MAX GPM
SIZE	ITEM #	CTN/CASE						
IPS								
3/4"	74003	1/10		6 1/4	3 5/8	3/4	1/2	6
1"	74004	1/10		6 1/4	3 3/4	1	1/2	10
1 1/4"	74005	1/10		6 1/4	3 7/8	1 1/4	1/2	15
1 1/2"	74006	1/10		8 13/16	5	1 1/2	1/2	30
2"	74007	1/10		8 13/16	5 1/8	2	1/2	40
Cx C								
3/4"	75003	1/10		6 1/4	4	3/4	1/2	6
1"	75004	1/10		6 1/4	4 1/2	1	1/2	10
1 1/4"	75005	1/10		6 1/4	4 1/2	1 1/4	1/2	15
1 1/2"	75006	1/10		9 1/8	5 5/8	1 1/2	1/2	30
2"	75007	1/10		9 1/8	6 1/8	2	1/2	40
Press								
3/4"	78003	1/10		6 1/4	7	3/4	1/2	6
1"	78004	1/10		6 1/4	7 3/8	1	1/2	10
1 1/4"	78005	1/10		6 1/4	7 11/16	1 1/4	1/2	15
1 1/2"	78006	1/10		9 1/8	9 1/8	1 1/2	1/2	30
2"	78007	1/10		9 1/8	9 7/8	2	1/2	40

REPLACEMENT VENT ASSEMBLY



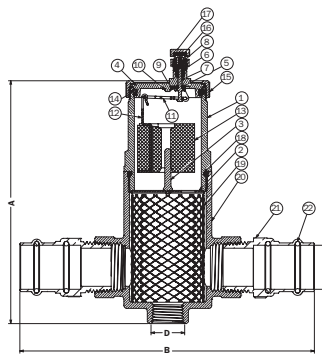
SIZE	ITEM #	CTN/CASE
Fits 3/4"-2" Air Separators	74000	1/50

AIR SEPARATOR



IPS & Cx C

NO	DESCRIPTION	MATERIAL
1	LOWER BODY	BRASS
2	UPPER BODY	BRASS
3	BODY CAP	BRASS
4	BODY CAP RING	BRASS
5	VENT CAP	BRASS
6	VENT CAP WASHER	BRASS
7	VENT PIN ASSEMBLY	BRASS
8	VENT SPRING	STAINLESS STEEL
9	VENT O-RING	EPDM
10	VENT/FLOAT ARM ASSEMBLY	STAINLESS STEEL
11	BODY CAP O-RING	EPDM
12	FLOAT	PLASTIC
13	FLOAT ALIGNMENT PIN	BRASS
14	BODY O-RING	EPDM
15	BAFFLE	STAINLESS STEEL
16	MESH	STAINLESS STEEL



PRESS

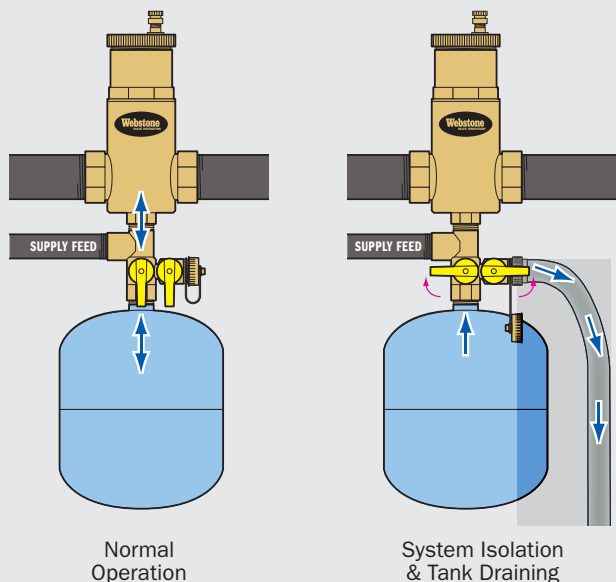
NO	DESCRIPTION	MATERIAL
1	UPPER BODY	BRASS
2	BAFFLE	STAINLESS STEEL
3	FLOAT ALIGNMENT PIN	BRASS
4	BODY CAP	BRASS
5	VENT O-RING	EPDM
6	VENT SPRING	STAINLESS STEEL
7	VENT PIN ASSEMBLY	BRASS
8	VENT LOCATING NUT	BRASS
9	VENT BRACKET	STAINLESS STEEL
10	SNAP RING	STAINLESS STEEL
11	VENT/FLOAT ARM	STAINLESS STEEL ASSEMBLY
12	FIXED LINK	STAINLESS STEEL
13	FLOAT ALIGNMENT PIN	PLASTIC
14	BODY CAP O-RING	EPDM
15	BODY CAP RING	BRASS
16	VENT CAP WASHER	EPDM
17	VENT CAP	BRASS
18	BODY O-RING	EPDM
19	MESH	STAINLESS STEEL
20	LOWER BODY	BRASS
21	PRESS FITTING BODY	BRASS
22	PRESS FITTING O-RING	EPDM



IDEAL FOR USE WITH WEBSTONE AIR SEPARATORS



HANDLE OPERATION



DESIGN ADVANTAGES

- The 3-way ball controls flow between the expansion tank and the system
- Easily install, isolate, drain & replace any expansion tank
- Quickly connect entire system to the cold water feed
- Minimizes clean up time when replacing the tank
- Guaranteed for Life

EXPANSION TANK PRO SERVICE VALVE™

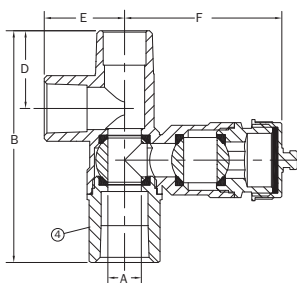
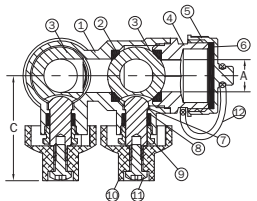
Full Port Forged Brass Ball Valves w/ Hi-Flow Hose Drain

600 WOG

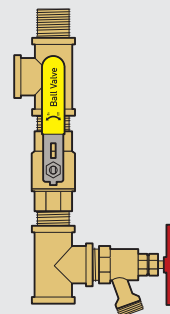
SIZE	STANDARD BRASS ITEM#	CTN/CASE	A	B	C	D	E	F
1/2"	41672	1/30	1/2	3 3/8	1 9/16	1 1/8	1 3/16	2 5/16



NO.	DESCRIPTION	MATERIAL
1	BODY	BRASS
2	SEAT	PTFE
3	BALL	BRASS HCP
4	END CAP	BRASS
5	CAP	BRASS
6	WASHER	EPDM
7	STEM	BRASS
8	STEM SEAL	PTFE
9	PACKING GLAND	BRASS
10	HANDLE	ENAMEL COATED ALUMINUM
11	HANDLE SCREW	BRASS
12	STRAP	EPDM



THE OLD WAY
REPLACES 7 COMPONENTS
ELIMINATES 6 LEAK PATHS
SAVES 54 MINUTES OF LABOR



This content has been provided for the express purpose of demonstrating a product's function in a system and should not be used as a reference for designing or assembling any working installation. The user is solely responsible for ensuring that all products are used and all systems are designed in accordance with all applicable federal, state and local codes.

Pro-Pal® is a registered trademark of Webstone.
© 2016 Webstone, a brand of NIBCO FORM#: AS-0816

Webstone
VALVE INNOVATION

ONE APPIAN WAY WORCESTER, MA 01610
P.O. BOX 59 WORCESTER, MA 01613
P: (800) 225-9529 • F: (800) 336-5133
www.webstonevalves.com