

TROOPER



Oil Fired, Chimney Vented, Cast Iron Water Boiler

- Traditional design, enhanced for greater value and ease of installation
- Up to 87.3% AFUE
- Premium control set
 - Hydrolevel Hydrostat, pre-installed low water cut-off
- Beckett® AFG, Carlin® & Riello® burners available (purchased separately)
- Reliable, American-made cast iron heat exchanger
 - Wet base design
- Models available with optional tankless coil
- Metal push nipples
 - Resistant to chemicals, offer increased boiler longevity
- Swing-out cast iron door
 - With quick disconnect, offers ease of access and serviceability
- 7 sizes available, 0.65-1.90 GPH
- Lifetime limited warranty

ARCHER
BOILERS

TROOPER

Standard Equipment

- Fully packaged
- Integrated boiler control system
- Choice of Beckett®, Carlin®, or Riello® burner
- Electronic ignitor 14KV
- Taco® 007e circulator
- Metal section connectors
- Combustion target wall
- Vertical flue design
- Insulated, powder coated, steel jacket, designed for easy removal
- Relief valve
- Temperature/pressure gauge

Ratings & Specifications

Model	Burner Capacity		Heating Capacity (MBH)	Net AHRI Ratings Water (MBH)	AFUE%	Minimum Chimney Requirements (In.)	Approximate Shipping Weight (lbs.)
	GPH	MBH					
TPW-3-065A ¹	0.65	91	80	70	87.3*	8 x 8 x15	560
TPW-3-075A ¹	0.75	105	92	80	87.0*	8 x 8 x15	560
TPW-3-100A	1.00	140	122	106	86.3	8 x 8 x15	560
TPW-4-120A ¹	1.20	168	148	129	87.0*	8 x 8 x15	680
TPW-4-150A	1.50	210	182	158	86.0	8 x 8 x15	680
TPW-5-175A ¹	1.75	245	214	186	86.4	8 x 8 x15	800
TPW-5-190A	1.90	266	231	201	86.1	8 x 8 x15	800

¹ Original boiler size
 1. Field conversion size, see "Burner Options" chart below

Net AHRI ratings are based on a piping and pickup allowance of 1.15. The manufacturer should be consulted before selecting a boiler for installations having unusual piping and pickup requirements, such as intermittent system operation, extensive piping systems, etc.

* ENERGY STAR® certified



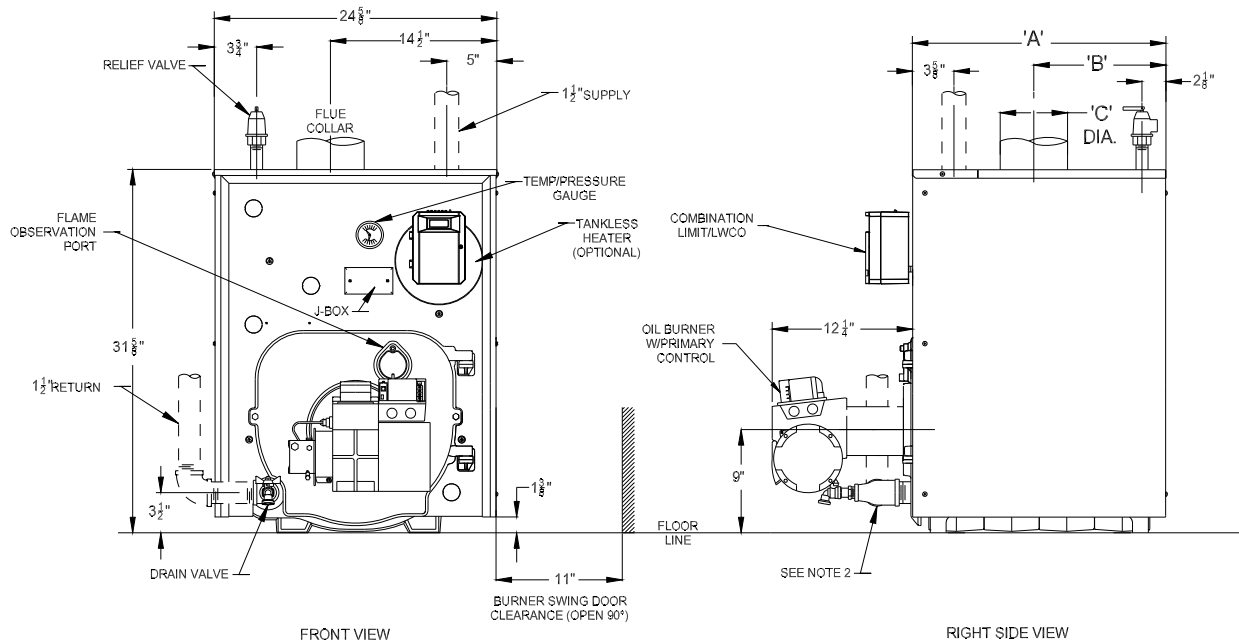
Burner Options¹

Part No.	Burner	Boiler Models
131521B	Beckett	TPW-3-100A, TPW-3-075A, TPW-3-065A
131522B	Beckett	TPW-4-150A, TPW-4-120A
131523B	Beckett	TPW-5-190A, TPW-5-175A
131521C	Carlin	TPW-3-100A, TPW-3-075A
131522C	Carlin	TPW-4-150A, TPW-4-120A
131521R	Riello	TPW-3-100A, TPW-3-075A
131522R	Riello	TPW-4-150A, TPW-4-120A

Dimensions (inches)

Model	Sections	A	B	C
TPW-3-065A	3	17-3/8"	8-15/16"	6"
TPW-3-075A	3	17-3/8"	8-15/16"	6"
TPW-3-100A	3	17-3/8"	8-15/16"	6"
TPW-4-120A	4	22-3/8"	10-13/16"	7"
TPW-4-150A	4	22-3/8"	10-13/16"	7"
TPW-5-175A	5	27-3/8"	13-5/16"	8"
TPW-5-190A	5	27-3/8"	13-5/16"	8"

1. Complete boiler requires selection of one of the burner options listed, nozzle for lower firing rate provided loose in box



Notes:

1. Circulator supplied loose – may be installed on supply or return
2. Return fittings and drain valve shipped loose
3. Piping shown hidden not furnished with boiler