

Stainless Steel Shielded Transition Couplings

Specification Sheet

FEATURES & BENEFITS

- For Use With Dissimilar DWV Pipe & Fittings
- Installation Torque: 60" lbs
- Maximum Test Pressure: 4.3 PSI
- Maximum Operating Temp.: 180°F
- Product Conforms with: ASTM C1460, ASTM C564, CSA B602, UPC, & cUPC
- Clamps Joined With Rivets
- Sizes 1/2" - 8"

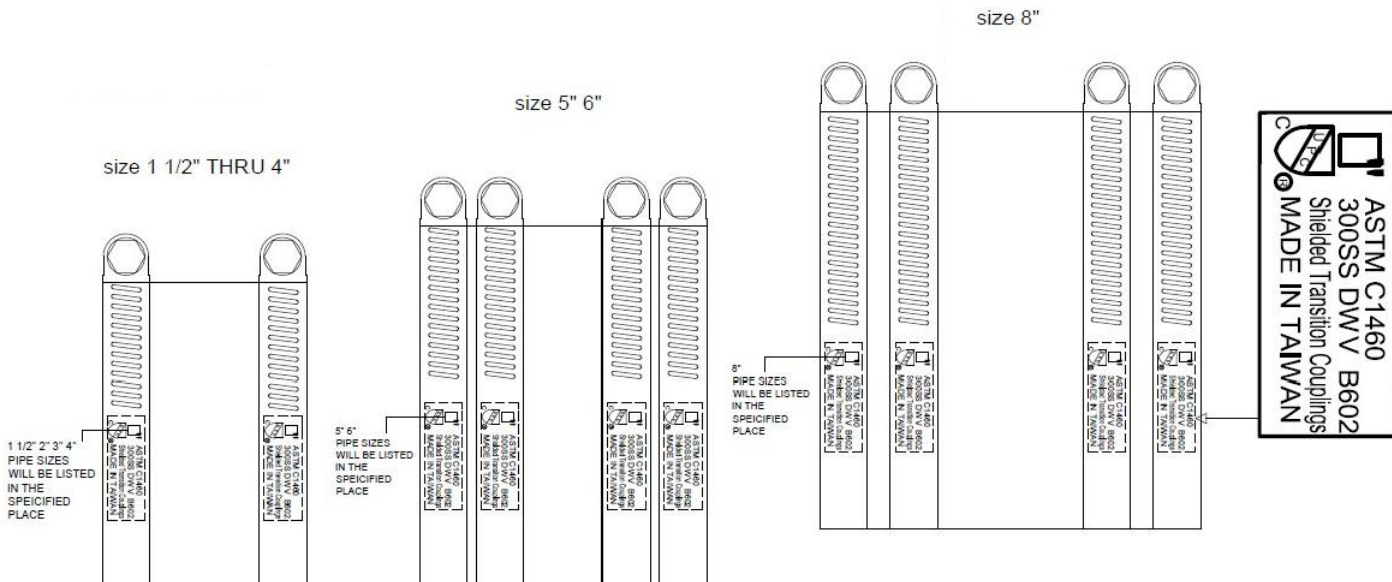


MATERIAL SPECIFICATIONS

Part	Material
Band	SS 301
Housing	SS 304
Screw	SS 304 (5/16" Hex - No Slot)
Gasket	Neoprene

LEGEND

CI	No Hub Cast Iron
PL	Sch. 40 PVC
ST	Steel, Iron Pipe Size
XHCI	Extra Heavy Weight Cast Iron

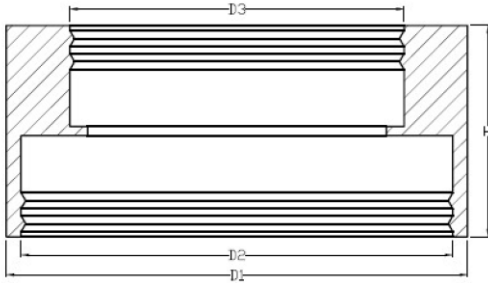


MATCO-NORCA
Global sourcing. National compliance. Local service.

www.matco-norca.com • mail@matco-norca.com

Stainless Steel Shielded Transition Couplings

Specification Sheet



Part #	D1	D2	D3	H
Cast Iron to Plastic, Steel or Extra-Heavy Cast Iron				
4570707CP	2.20	1 1/2" CI, PL. or ST.	1 1/2" CI, PL. or ST.	2.13
4570808CP	2.53	2" CI, PL. or ST.	2" CI, PL. or ST.	2.13
4570807CP	2.72	2" CI, PL. or ST.	1 1/2" CI, PL. or ST.	2.13
4571010CP	3.77	3" PL, ST, or XH CI.	3" CI	2.13
4571110CP	4.74	4" CI	3" PL, ST, or XH CI.	2.13
4571111CP	4.74	4" PL, ST, or XH CI.	4" CI	2.13
4571212CP	5.78	5" PL, ST, or XH CI.	5" CI	3.00
4571313CP	6.95	6" PL, ST, or XH CI.	6" CI	3.00
4571414CP	8.83	8" PL, ST, or XH CI.	8" CI	3.98
Cast Iron, Plastic or Steel to Copper				
4570706CK	2.20	1 1/2" CI, PL. or ST.	1 1/4" Copper or 1" PL.	2.13
4570707CK	2.20	1 1/2" CI, PL. or ST.	1 1/2" Copper or 1 1/4" PL.	2.13
4570807CK	2.72	2" CI, PL. or ST.	1 1/2" Copper or 1 1/4" PL.	2.13
4570808CK	2.72	2" CI, PL. or ST.	2" Copper	2.13
4571008CK	3.77	3" CI	2" Copper	2.13
4571010CK	3.77	3" CI	3" Copper	2.13
4571110CK	4.74	4" CI	3" Copper	2.13
4571111CK	4.74	4" CI	4" Copper	2.13
4570705CK	2.20	1 1/2" CI, PL or ST	3/4" PL, ST or 1" Copper	2.13
4571007CK	3.77	3" CI	1 1/2" Copper or 1 1/4" PL.	2.13
4570806CK	2.75	2" CI, PL. or ST.	1 1/4" Copper or 1" PL.	2.13
Cast Iron, Plastic or Steel to Tubular				
4570707T	2.20	1 1/2" CI, PL. or ST.	1 1/2" Tubular	2.13
4570807T	2.75	2" CI, PL. or ST.	1 1/2" Tubular	2.13
4570707TT	2.20	1 1/2" Tubular	1 1/2" Tubular	2.13
Copper to Copper				
4570707K	1.90	1 1/2" Copper	1 1/2" Copper or 1 1/4" PL.	2.13
4570808K	2.72	2" Copper	2" Copper	2.13
4570807K	2.72	2" Copper	1 1/2" Copper or 1 1/4" PL.	2.13
4571010K	3.77	3" Copper	3" Copper	2.13
Cast Iron to Cast Iron, Plastic or Steel				
4571008C	3.77	3" CI	2" CI, PL. or ST.	2.13
4571108C	4.74	4" CI	2" CI, PL. or ST.	2.13
4571110C	4.74	4" CI	3" CI	2.13
4571211C	5.78	5" CI	4" CI	3.00
Plastic, Steel or Extra-Heavy Cast Iron to Plastic, Steel or XH CI				
4571010P	3.77	3" PL, ST, or XH CI.	3" PL, ST, or XH CI.	2.13
4571110P	4.74	4" PL, ST, or XH CI.	3" PL, ST, or XH CI.	2.13
4571111P	4.74	4" PL, ST, or XH CI.	4" PL, ST, or XH CI.	2.13
4571313P	6.95	6" PL, ST, or XH CI.	6" PL, ST, or XH CI.	3.00
Copper to Cast Iron, Plastic or Steel				
4570807KC	2.72	2" Copper	1 1/2" CI, PL. or ST.	2.13
4571008KC	3.77	3" Copper	2" CI, PL. or ST.	2.13
4571110KC	4.74	4" Copper	3" CI	2.13
Plastic, Steel or Extra-Heavy Cast Iron to Copper				
4571008PK	3.77	3" PL, ST, or XH CI.	2" Copper	2.13
4571010PK	3.77	3" PL, ST, or XH CI.	3" Copper	2.13
4571110PK	4.74	4" PL, ST, or XH CI.	3" Copper	2.13
4571111PK	4.74	4" PL, ST, or XH CI.	4" Copper	2.13
Plastic, Steel or Extra-Heavy Cast Iron to Cast Iron, Plastic or Steel				
4571008PC	3.77	3" PL, ST, or XH CI.	2" CI, PL. or ST.	2.13
Thinwall Plastic to Sch. 38 Plastic				
4571010TWP	3.77	3" Sch. 40 PL.	3" Thinwall PL.	2.13
4571111TWP	4.74	4" Sch. 40 PL.	4" Thinwall PL.	2.13
Copper to Tubular				
4570707KT	2.20	1 1/2" Copper	1 1/2" Tubular	2.13
4570807KT	2.75	2" Copper	1 1/2" Tubular	2.13