



## EXPERIENCE THE PINNACLE OF HEATING EFFICIENCY

EFFINITY™



To learn more, visit  
[www.modinevac.com/effinity](http://www.modinevac.com/effinity)  
or call 800-828-HEAT

Follow us @ModineHVAC  
See us at [YouTube.com/ModineHVAC](https://www.youtube.com/ModineHVAC)  
[www.facebook.com/ModineHVAC/](https://www.facebook.com/ModineHVAC/)  
[www.linkedin.com/company/modinevac/](https://www.linkedin.com/company/modinevac/)

Modine Manufacturing Company  
1500 DeKoven Avenue  
Racine, Wisconsin 53403-2552



Proudly Manufactured in the USA



## THE MOST EFFICIENT UNIT HEATER IN NORTH AMERICA.

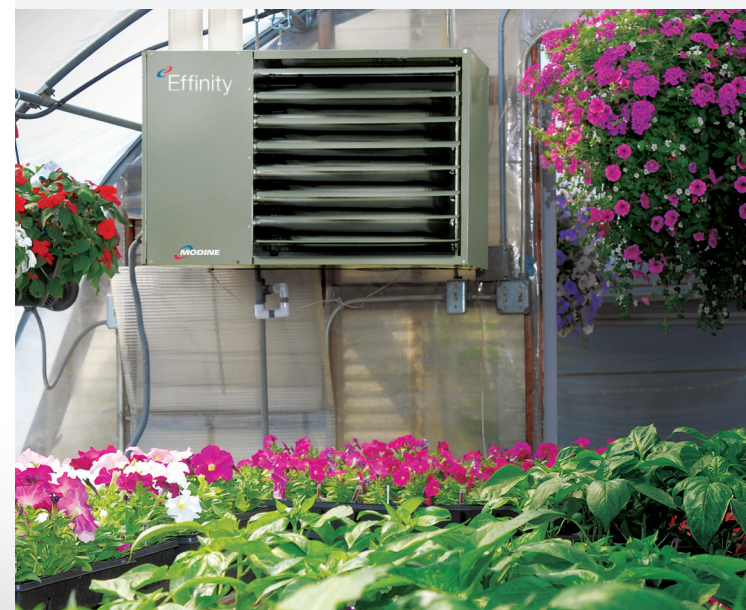
Modine's Effinity™ (model PTC) unit heater line is the most efficient gas-fired, condensing unit heater in North America.

The Effinity will dramatically lower energy costs and emissions. Blower models are available on models 215-310 for even greater savings.

Effinity PTC260 (260,000 BTU/hr) vs. Comparable Power-Vented Unit Heater		
City	Equivalent Urban Trees Planted	Pounds of CO <sub>2</sub> Saved
Chicago, IL	142	12,230
Las Vegas, NV	56	4,833
Minneapolis, MN	171	14,679
Nashville, TN	84	7,222
Oklahoma City, OK	84	7,196
Philadelphia, PA	111	9,515
Portland, OR	105	9,062
Uses less natural gas for fewer CO <sub>2</sub> emissions		

Just one Effinity can save more than a thousand dollars in energy and thousands of pounds in CO<sub>2</sub>. Savings are more than doubled compared to gravity-vented unit heaters.

With multiple units per building, it is not difficult to imagine the positive impact this can have on your bottom line and the environment.



## INSTANT SAVINGS THROUGH UTILITY REBATE PROGRAMS

Federal, state and utility rebates are available, along with tax incentives. Visit [www.dsireusa.org](http://www.dsireusa.org) to find out what is available in your area.

IN MANY REGIONS, THE AMOUNT OF CO<sub>2</sub> REDUCED FROM ONE EFFINITY IS EQUIVALENT TO MORE THAN 100 TREES.

## DESIGNED FOR FASTER INSTALLATION AND LOWER INSTALLATION COSTS.

### Key Features

- Up to 97% efficient, with all models offering a minimum of 93% efficiency
- Ten model sizes available, ranging from 55,000-310,000 BTU/hr
- Blowers available for more robust air distribution\*
- Building Management System standard on all units
- All sizes are separated combustion
- Can be vented as either two-pipe or concentric vent system with 3" and 4" PVC
- Exclusive Modine Conservicore Technology is manufactured to withstand acidic condensate
- BTU capacities are similar to 80% efficient models
- Optional condensate pump and cradle

### Building Management System with Energy Saver Control

- As temperature increases, switch disables gas and uses stratified ceiling air to heat the space below
- As ceiling air temperature decreases, gas controls automatically re-engage

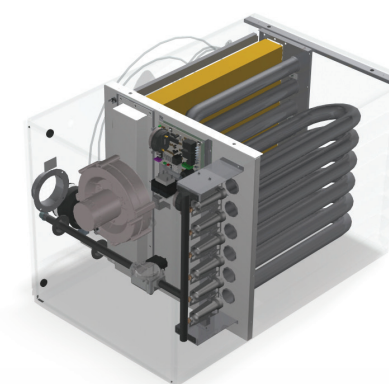
### Standard Contractor Convenience Package

- Easy connectivity and troubleshooting
- Disconnect on unit for easy access
- Prewired receptacle outlet
- Exterior operating lights
- External thermostat connections
- Built-in overflow condensate switch

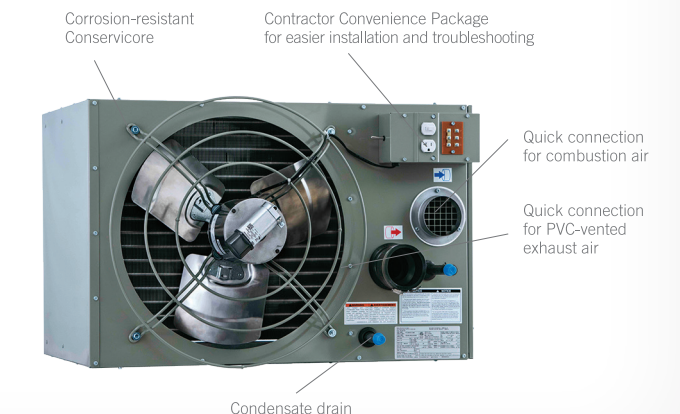
### Optional Upgrades

- Condensate pump, mounting kit and a PH neutralizing kit
- Stainless steel primary heat exchanger
- GFCI surge protection adaptor plug for service
- 30, 60 and 90 degree air deflector hoods
- A selection of room thermostats
- Two-point mounting kit
- Horizontal and vertical concentric vent kits
- Finger-proof fan guard
- Conversion kits for natural gas and propane, including high-altitude kits

	Model Number									
	PTC55	PTC65	PTC85	PTC110	PTC135	PTC156	PTC180	PTC215	PTC260	PTC310
BTU/hr Input	55,000	65,000	85,000	110,000	135,000	156,000	180,000	215,000	260,000	310,000
kW	16.1	19	24.9	32.2	39.6	45.4	52.7	63.0	76.2	90.8
BTU/hr Output	51,150	60,450	79,050	102,300	125,550	144,150	167,400	199,950	241,800	288,300
kW	15	17.7	23.1	30.0	36.8	42.2	49.0	58.6	70.8	84.5



The Effinity condensing unit heater utilizes a bent tube heat exchanger and is ready for quick PVC pipe connections.



\* Only available on the following models: PTC215, PTC260, PTC310